

Based in the old part of the town, a short walk from the seafront and all the attractions of South Bay



Follow Tunny Cottage on FaceBook



www.tunnycottage.co.uk



The Beach at South Bay



Peasholm Park

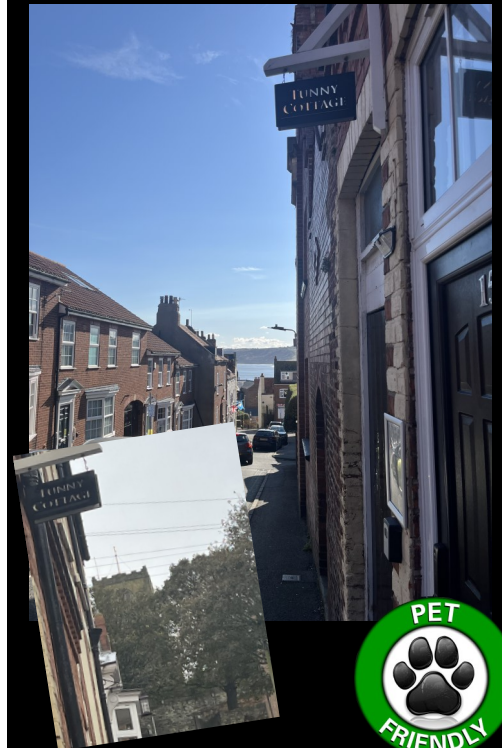


North Bay

Scan the QR Code to visit our Website



www.tunnycottage.co.uk



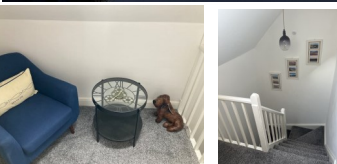
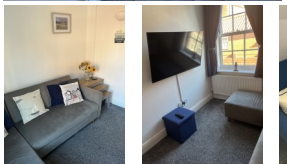
Your home away from home

Old Town, Scarborough

Rest, Relax, Recharge

www.tunnycottage.co.uk





Tunny: (noun) a tuna, especially the blue fin

A cosy stylish cottage arranged over three floors, ideally located in the old town area of Scarborough's South Bay.

St Mary's Church, the resting place of Anne Brontë is a short walk away. The nearby Scarborough Castle walls can be seen from the cottage windows.

Recently renovated to a high standard the Cottage offers a modern interior design within a quirky traditional fisherman's cottage.

To the rear there is a small sunny courtyard garden.

This 2 bedroom cottage consists of a double bed in the main bedroom, 2 single beds in the upper floor bedroom and a sofa bed in the lounge so the property will accommodate up to 6 people.

The ground floor offers a large kitchen and diner area with an integrated washer/dryer and dishwasher.

Well behaved dogs are welcome!

The shower room has a low level quadrant shower, toilet, basin and heated towel rail.

The top floor landing is the perfect place to sit and relax, read a book or catch up on emails.

The lounge has a 50" wall mounted SMART TV and both bedrooms have SMART TV's which are connected to our free high speed WIFI. You will also find Alexa in the kitchen.

The cottage has front and rear access via steps. A small courtyard garden is at the rear accessed from the rear kitchen door.

We are happy to help with any issues or questions you may have during your stay. Please contact us via the details on the welcome poster in the kitchen.

The cottage is located on a steep hill which is a feature of the Old Town area of Scarborough and **may not be suitable for people with mobility issues**. Parking is limited to street bays which between 9am - 5pm and require a daily permit card to be cleared displayed in the vehicle. Additional pay and display carparks are

available within walking distance at approximately £6 per day.



www.tunnycottage.co.uk

